

Appendix C Morris and Crystal Lake Park

Morris Park and Crystal Lake were identified by the City of Englewood as sites with particular need for community input and design suggestions.

C.1 Community Engagement

On November 12th, residents were invited you to get to know these two parks and to share thoughts on how they can become even better places.

1:00 pm Morris Park (Cross Street)

2:30 Carpool

3:00 pm Crystal Lake Park (Sheffield Avenue)

Altogether, 22 residents from all four wards participated, however, most of the participants reside in Ward 2 and Ward 3. Attendees were invited to share their thoughts using prepared notecards in three colors, each with a unique identification number:

- Green: What do you like about this spot the most?
- Yellow: You have never been here.
What is your first impression?
- Red: Where do you see challenges?

CUES team members assisted participants to place the card at the location that the comment referred to and mapped the placed card.



Workshop at Morris Park



Workshop at Crystal Lake Park

Notecards placed by residents were geo-located



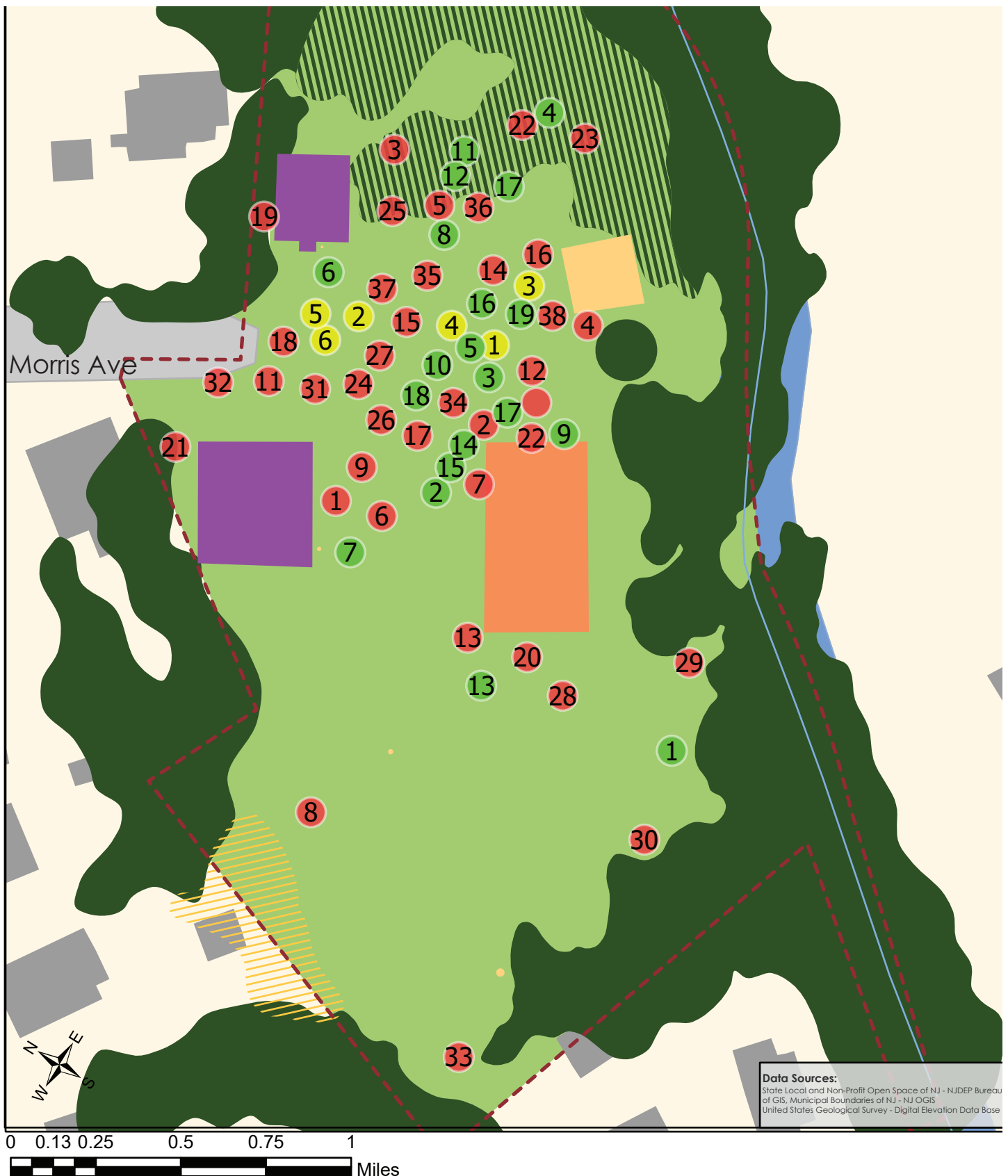
C.1.1 Morris Park

What do you like about this spot the most?

Community members praised that Morris Park presents itself as a relatively large open space, with a spacious feeling, framed by trees and shrubs (card green #1, 13). The basketball court (green # 9) and the seating areas add to the perception that this is a place for the neighborhood (green # 10).

Critical comments included the lack of maintenance (red # 1, 14) and damaged play equipment (red # 6,9, 25). The lack of seating/bleachers for the basketball court was mentioned (red # 10, 11). More vegetation was suggested to enhance attractiveness and serve as sound barrier for the neighbors. Parking was suggested as (red # 11, 31, 36) a measure to improve accessibility.

1	The large size of the park
2	there is a lot of space
3	The basketball court
4	Trees/ Shrubs
5	Open Space
6	Off the beaten path
7	The playground is a great thing for the attention of families
8	The tree and the several plants at the left side are a nice addition to the welcoming feeling of the park
9	The basketball court is a great part of the park
10	"Neighborhood Feel"
11	It is peaceful and surronbded by trees
12	it is peaceful and surrounded by trees
13	Love the open field
14	Open Space
15	Basketball Facility, big open space, potential for improved playground
16	Away from traffic which could be a hazard
17	Pretty colors in Fall
18	Location and the size
19	Kids come to the park to hang out



You have never been here.
What is your first impression?

1	I like the scenery of the park
2	I didn't even know this park existed. It is very peaceful though and peaceful!
3	Beautiful park
4	It looks empty and it looks like it needs a lot of maintenance and the entrance is barely visible
5	The place looks empty. It doesn't look like a park. Also the place is too hidden, people wouldn't know if this was a park.
6	Hidden location

Where do you see challenges?

1	Broken equipments
2	Lack of activities
3	Lack of swings/picnic tables
4	Lack of Flowers
5	Space can be utilized more. Could be more places to play, wings, etc. Could 5 make a garden
6	The playground is blocked off
7	Limiting Seating
8	The wheat can be a problem. Fencing and preserving it from people is needed
9	The playground is fenced and does not look welcoming
10	The basketball court seem runned down. Need improvement.
11	Porous pavers for 6 parking spaces inside the park entrance
12	The basketball court is out of place. No bleachers either. No benches even.
13	It is very plain
14	Everywhere, the whole park needs maintenance
15	I think the whole park should be reconstructed
16	Very dangerous to have this high voltage box at a children's playgorund unfenced
17	Geese. Poorly maintained equipment. Need to keep grass trimmed. Parking.

18	It is so hidden. Maybe there should be a sign!
19	Neighbors complain of noise. Promoting awareness to residents.
20	Section the parts to add a couple new pieces to the paths.
21	Removal of bushes increase sound travel
22	More vegetation like flower and bushes would be nice
23	You cant sit on the bench
24	Take the sneakers off the electrical cables.
25	Replace swings
26	More Playground attractions
27	Not enough lighting
28	Open field looks awkward. Need something
29	Place for smokers
30	No place for dogs
31	No parking or charging stations or power outlets and need more lighting
32	Improve traffic flow with new entrance to the right of the gate with 1 way circular flow
33	Fencing + debris needs to be improved
34	Lack of walking paths. Lack of clean play spaces. Lack of play equipment. Poor lighting.

35	No parking/ or more parking
36	More lighting
37	Security cameras
38	Covering pumping station



Notecards at basketball court

C.1.2 Crystal Lake Park

The placement of the comment cards in close vicinity of the water's edge, and concentrated toward the location of our information stand, indicates the lake is the center of attraction, according to residents who describe the site as pleasant, peaceful, and serene (green # 3, 7, 8, 9, 10, 11, 12, 17).

At the same time, the lake attracts geese, which are considered a nuisance in the park (red # 4, 13, 14, 15, 16, 17, 19, 24, 31). This goes hand in hand with expressed concerns about water quality (red #12, 13,16, 19, 25, 32).

Overall, more opportunities for activity were mentioned (red # 2, 11, 28), including a desire to improve and extend the dog park (red # 1, 19, 27). It was also noted, that there no walking paths currently exist (red # 6, 7, 14, and that more seating would be appreciated (red # 6,9).

It is interesting that nobody mentioned parking, apparently on street parking available on Sheffield Street is considered sufficient

What do you like about this spot the most?

1	Nice to see dogs are welcome
2	The natural view, no litter
3	"I like how peaceful it is, and the view of the lake"
4	
5	"Beautiful, relaxing. Potential path along the water with exercise equipment on the side"
6	"The ability to wander and take apart of the parks area"
7	The lake
8	I like the lake
9	"The scenery is pleasant and peaceful during each season. Alot of poop though to walk through"
10	Nice lake
11	The water
12	"Trees and the water are nice. Nice to have a dog section"
13	Very peaceful and serene. Great placeto relax
14	It is very peaceful
15	"It is nice having green space so close to the house"
16	Beautiful meeting and recreation area
17	Water



You have never been here.
What is your first impression?

1	I like the scenery of the park
2	I didn't even know this park existed. It is very peaceful though and peaceful!
3	Beautiful park
4	It looks empty and it looks like it needs a lot of maintenance and the entrance is barely visible
5	The place looks empty. It doesn't look like a park. Also the place is too hidden, people wouldn't know if this was a park.
6	Hidden location

Where do you see challenges?

1	Broken equipments
2	Lack of activities
3	Lack of swings/picnic tables
4	Lack of Flowers
5	Space can be utilized more. Could be more places to play, wings, etc. Could 5 make a garden
6	The playground is blocked off
7	Limiting Seating
8	The wheat can be a problem. Fencing and preserving it from people is needed
9	The playground is fenced and does not look welcoming
10	The basketball court seem runned down. Need improvement.
11	Porous pavers for 6 parking spaces inside the park entrance
12	The basketball court is out of place. No bleachers either. No benches even.
13	It is very plain
14	Everywhere, the whole park needs maintenance
15	I think the whole park should be reconstructed
16	Very dangerous to have this high voltage box at a children's playgorund unfenced
17	Geese. Poorly maintained equipment. Need to keep grass trimmed. Parking.



18	It is so hidden. Maybe there should be a sign!
19	Neighbors complain of noise. Promoting awareness to residents.
20	Section the parts to add a couple new pieces to the paths.
21	Removal of bushes increase sound travel
22	More vegetation like flower and bushes would be nice
23	You cant sit on the bench
24	Take the sneakers off the electrical cables.
25	Replace swings
26	More Playground attractions
27	Not enough lighting
28	Open field looks awkward. Need something
29	Place for smokers
30	No place for dogs
31	No parking or charging stations or power outlets and need more lighting
32	Improve traffic flow with new entrance to the right of the gate with 1 way circular flow
33	Fencing + debris needs to be improved
34	Lack of walking paths. Lack of clean play spaces. Lack of play equipment. Poor lighting.

35	No parking/ or more parking
36	More lighting
37	Security cameras
38	Covering pumping station



C.2 Proposed Design Interventions

C.2.1 Morris Park

The proposed design interventions for Morris Park focus on enhancing accessibility, making the park more usable for the diverse needs of the neighborhood.

One component are the six parking spots at the entrance will provide access to the park for people with mobility issues. Of course, pavers must be permeable to reduce the amount of additional run off. Improving access was also the guiding principle for developing a circular path, numerous benches and seating areas offer locations to rest, enjoy the view, and have a conversation. Three sets of picnic tables and an additional pavilion support the social aspects of the park.

The two playgrounds shall stay at the current location but must be substantially updated. It is suggested that the northern playground close to the parking shall feature equipment for toddlers and younger children. The playground south of the park entrance and just across the basketball court should serve older children and teenagers. The added bleaches and other seating at the court will make it possible to watch games, supporting social interaction.

Water is collecting in the southeast corner of the park at the lowest elevation, supporting wet land

plants. It is suggested to expand the planting and introduce a more diverse planting palette, enhancing the water storage capacity. Across the park, additional tree plantings provide shade and mark seating areas.

The proposed design interventions would include:

Parking spots: 6

Pathways: 1000' length

Path width: 6'

Pump Station Access path length: 88'

Pumping station: 1,120 square feet

Lookout/gathering areas: 2600 square feet

Playgrounds(combined): 4500 square feet

Suggested next steps include engaging a NJ licensed landscape architecture firm to develop a feasibility study for the landscape improvements, including cost estimates.



C.2.2 Crystal Lake Park

New plantings along the lake shore will make it more difficult for geese to transition from land to water and thus make the site less attractive for them. The increased vegetation will also contribute to improving the water quality.

The current conditions do not allow for a circular path around the lake, because the lake is directly bounded by the sound barrier of Interstate 95 and water management infrastructure. The proposed solution is a floating bridge across the lake, connecting a new pathway system that will make it possible do walking loops. This brings more activities into the park, along with a designated activity area in the northwest of the site.

Seating areas and picnic tables along the path foster social interaction and provide opportunities to enjoy the scenery. The fencing of the dog park should be improved, an expansion would be possible but requires further discussion.

The proposed design interventions would include:
Floating Bridge: 480' length
New Pathways: 1440' length,
Lookout/gathering areas: 860 square feet

Suggested next steps include an in-depth analysis of the lake hydrology and its function with the Flat Brook Creek water system to determine the need of dredging and other measures to improve water quality. Another step to take is engaging a NJ licensed landscape architecture firm to develop a feasibility study for the landscape improvements, including cost estimates.

